

## Power and coverage conversion guide (air conditioners)

Power		Coverage
Kilowatts (kW)	BTU/hour (approx.)	Floor Area (m <sup>2</sup> )*
1	3400	
2	7000	
2.4	8200	
2.5	9000	
2.9	10000	16-20
3.2	10880	
3.3	11220	
3.5	12000	20-25
4	13600	23-28
4.4	15000	25-30
5	17000	29-34
5.3	18000	30-37
5.8	19720	
7.1	24140	
8	27200	

(Values are approximate)

Formula used:	1 BTU/h $\approx$ 1 kW x 3412
---------------	-------------------------------

\* Approximate ranges. Subject to a range of factors, including (but not limited to):

- Insulation in the room
- Number, size, direction and type of covering of windows in the room. Is it a closed room? Any openings or draughts?
- Carpeted floor in the room?
- Number of people/animals in the room
- Other sources of warmth/cold in the room
- Number and types of furniture in the room

### Tips for better cooling and safety

- Never leave your fan on overnight or when you're not at home. If available, set a timer to automatically switch off your fan.
- Remember to always test your smoke alarms.

# Room Air Conditioner Sizing Table

<b>A class</b>	Insulated roof space, walls and sub floor, full brick or brick veneer construction average size windows with awnings full shading south facing aspect, temperate weather conditions
<b>B class</b>	Insulated roof space, full brick or brick veneer construction average size windows with internal shades north facing aspect, temperate climate
<b>C class</b>	Insulated roof space, full brick or brick veneer construction average size windows with internal shades east facing aspect or <u>sub tropical</u> climate
<b>D class</b>	Little or no insulation, weatherboard, fibro or brick veneer construction, large windows, no shading from the sun westerly facing aspect.

*\* This guide has been developed to assist in model selection for the majority of normal residential air conditioning situations, and as per AS/NZS 3823 performance data. MHIAA recommend a heat load survey should be conducted by a licensed air conditioning installer.*

## Selection Chart Cooling

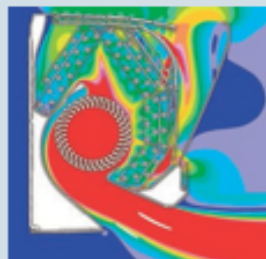
Model	A	B	C	D	max floor area metres squared
SRK17ZMP-S	17	14	12	10	
SRK25ZSA-W	25	21	18	15	
SRK35ZSA-W	35	29	25	21	
SRK50ZSA-W	51	43	36	30	
SRK71ZRA-W	71	59	51	42	

## Selection Chart Heating

Model	A	B	C	D	max floor area metres squared
SRK17ZMP-S	20	17	15	12	
SRK25ZSA-W	34	28	24	20	
SRK35ZSA-W	40	33	29	24	
SRK50ZSA-W	58	48	41	34	
SRK71ZRA-W	80	67	57	47	

# Features

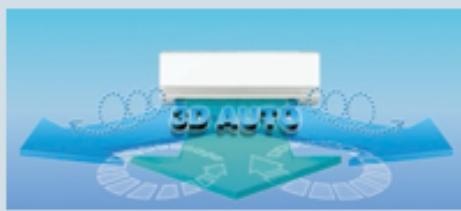
We used the same aerodynamic analysis technology as used in developing jet engines.



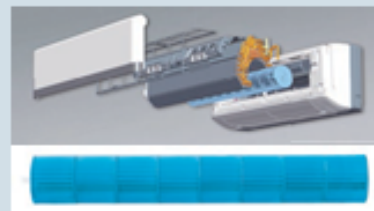
Fast ————— Slow  
Colors in the figure show the velocity.



**Superior Corrosion Resistance**  
The base of the outdoor unit is hot dipped to provide superior corrosion and scratch resistance.



**3D AUTO Vertical + Horizontal AIR SCROLL**  
3D AUTO is a one touch **programmable**. Three motors (one vertical working motor + two horizontal working motors) make three independent air flow controls. The air flow is uniform, quiet and reaches a long distance from the indoor unit.



**Anti-microbial Indoor fan**  
The blower fan has undergone anti-microbial treatment to resist growth of mold and germs, making the system clean and safe.



**Silicon-coated PCB**  
The printed circuit board of the outdoor unit is coated by silicon. The coating ensures longevity of the board in humid conditions.

## Wi-Fi Option

**IntesisHome**®   
Your home in the cloud



Easy and intuitive Wi-Fi AC Control from anywhere via your smartphone, tablet or computer.

Easier than ever, always within reach, always under control. Set up the patterns that work for you, have the unit running only when you want them.

Easy to use. **Optimise** your resources, **run** set scenes and receive **personalised** alerts.

## Allergen Clear System

The 'Allergen Clear system' suppresses the **influence** of the allergen caught by the **filter** by controlling the temperature and humidity.



**Catching Allergen on the Filter**



**Cooling Operation**  
To make condensing water.



**Heating Operation**  
To give moisture to the Filter to inactivate allergen



**AIR Purify Self-Clean Operation**  
To dry up the indoor unit

