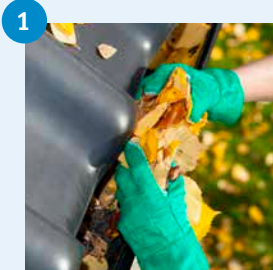
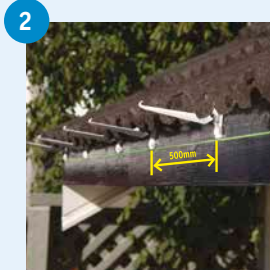


Maintenance



Clear debris

Regularly check and clear debris from the inside of your spouting and/or downpipes.



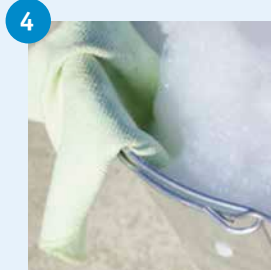
Check brackets

Check brackets are intact, spaced max 500mm apart and spouting has **even fall towards** outlet to avoid water ponding. (Min 5mm per 10m)



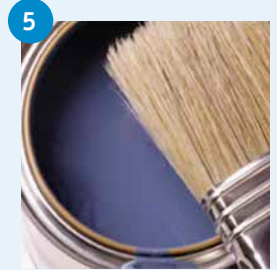
Check expansion joiner

Unclip expansion joiner, clean the rubber seal of any dirt or grit and re-lubricate with a silicone based lubricant before reassembly.



Clean once per year

Wash your Marley spouting and downpipe system annually using warm soapy water and a soft bristled brush or cloth. Rinse with clean water.



Painting

Clean spouting or downpipes and allow to dry. Apply mineral-based undercoat and two coats of acrylic paint.

NB. Do not paint inside of spouting or brackets, darker colours require additional expansion allowance.

Repairs

Repair damaged spouting



Block spouting with cloth to create dry working area. Mark and cut 50mm inside bracket either side of damaged area.



Replace any damaged brackets. Place joiner and expansion joiner then measure distance in between for replacement piece.

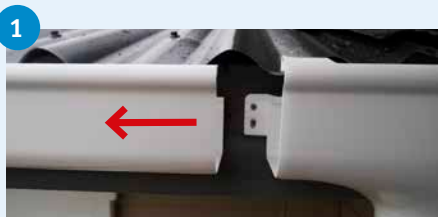


Cut replacement section on ground and solvent cement a joiner and expansion joiner to each end.



Roll the end with the expansion joiner into place by first engaging the back lip and then clicking front lip into position. Then solvent cement the joiner at the other end.

Fixing spouting creep



Spouting creep is when expansion and contraction does not occur in a conventional manner and may result in spouting pulling out of the expansion outlet or pushing into outlet and causing blockages.



Re-insert spouting into expansion outlet. Ensure end of spouting aligns with temperature marking on inside face of outlet.



Secure spouting to fascia using a screw at the point furthest from the expansion outlet in the same run. This will control movement to and from the expansion outlet.