

Swing Down
**Baby Bed
Rail**

Instruction Manual

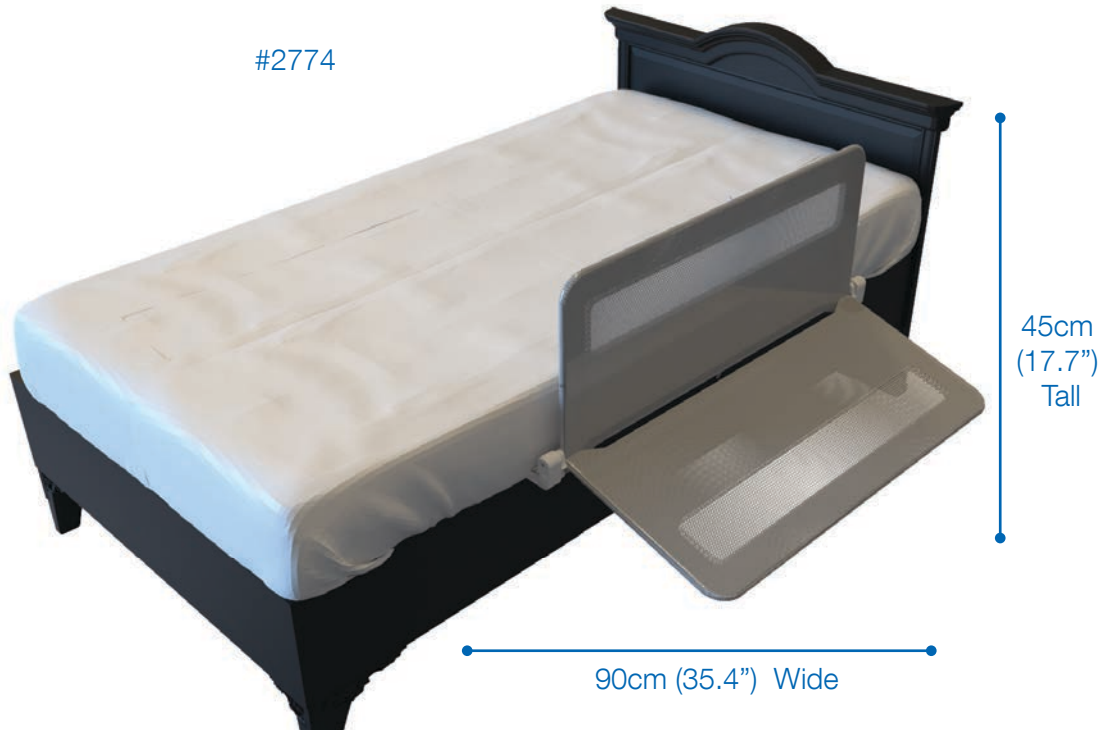
INSTALLATION VIDEO



Proud
Supporter



#2774



**IMPORTANT! READ AND
FOLLOW THESE INSTRUCTIONS
CAREFULLY AND KEEP FOR
FUTURE REFERENCE.**

This product complies with safety standard BS 7972:2001 + A1:2009.

TABLE OF CONTENTS

SAFETY INFORMATION	
General	03
Maintenance	03
Warnings	04
WHAT'S IN THE BOX	
Parts	06
INSTALLATION	
Bar Installation	07
Mesh Installation	08
Positioning the Bed Rail	10
Minimum Distance Warning	11
OPERATION	
Using the Bed Rail	12
Cleaning Instructions	12
	13
SUPPORT	
Warranty Certificate	14
Warranty Card	15
After Sales Support	15

SAFETY INFORMATION

MAINTENANCE

Regularly check that the gate is functioning correctly, lubricate hinges and moving components with a suitable spray lubricant. Tighten and adjust mounts to ensure secure smooth operation. Inspect all components regularly and stop using if any component is damaged or missing.

GENERAL

Read this instruction manual carefully and keep it in a safe place for future reference. The correct use and maintenance of this product is essential.

WARNINGS

WARNING Adult assembly required.

WARNING Read all the instructions before assembly and use of the product.

WARNING Dispose of all packaging materials carefully after assembly.

WARNING Not suitable for use of children under the age of 18 months or when the child is over the age of 5 years.

WARNING Only use the bed rail when the child is able to climb in and out of bed unaided.

WARNING The bed rail should not be used as a substitute for a cot, as it cannot provide the same level of safety as a cot.

WARNING The bed rail should be periodically checked for its general condition with particular reference to the security of any locking mechanism and/or hinges that are used on the product.

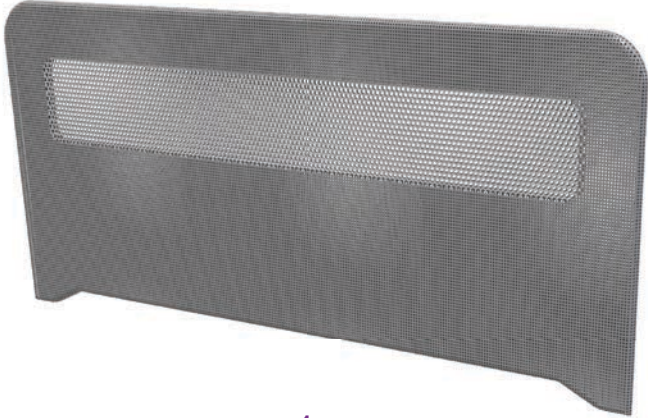
WARNING The maximum thickness of mattress for which the bed rail is suitable is 270mm (10.6”).

WARNING Intended for use with single or children’s mattress only.

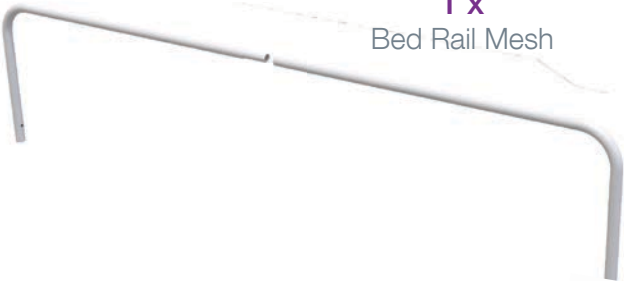
WARNINGS

- WARNING** Additional and replacement parts shall be obtained only from the manufacturer.
- WARNING** This bed rail should not be used on a sleeping surface that is more than 600mm (23.6”) from the floor.
- WARNING** To prevent risk of strangulation it is essential to ensure that when the bed guard is fitted into position, there is a gap of at least 250mm (9.8”), between each end of the bed and the corresponding end of the bed guard.
- WARNING** Care should be taken in unpacking and assembly.
- WARNING** Fit the bed rail so that its side, when in the locked position or when placed in the fitted position, touches the side of the mattress.
- WARNING** This bed rail shall not be used unless the fittings are in place and securely attached to both the bed and/or the mattress and the bed rail.
- WARNING** Once fitted in place, the bed rail should be checked to ensure that it is properly fitted and secure.

PARTS



1 x
Bed Rail Mesh



1 x
Upper Support Bar



2 x
Under Bar With Strap



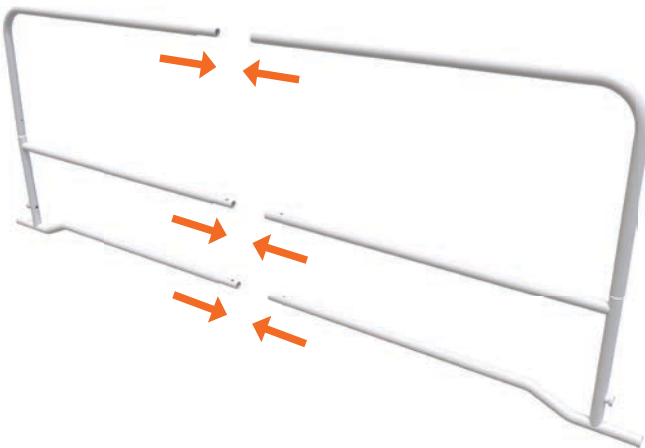
1 x
Bottom Support Bar

STEP 1: BAR INSTALLATION

1. Insert Upper Support Bar into Bottom Support Bar. Make sure the spring pin fits securely into opposing hole so that the two pieces cannot pull apart.

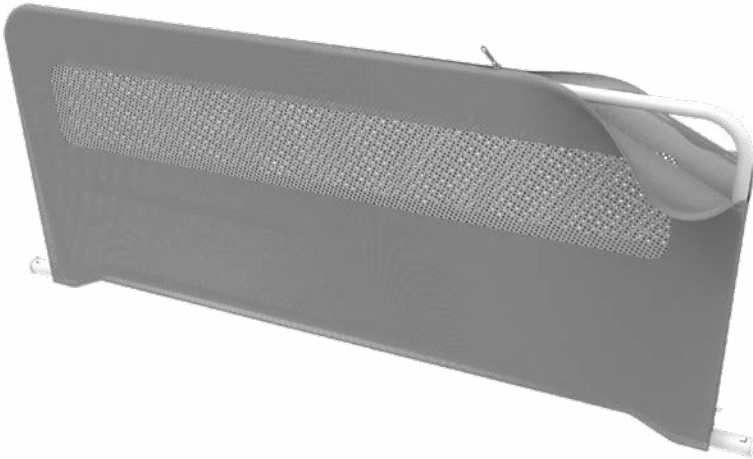


2. Connect the two sides. Make sure the spring pin fits securely into opposing hole so that the bed rail cannot pull apart.

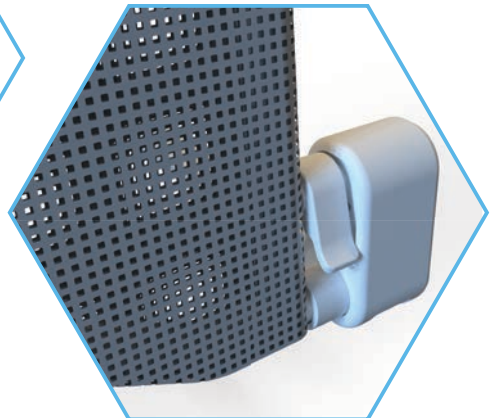
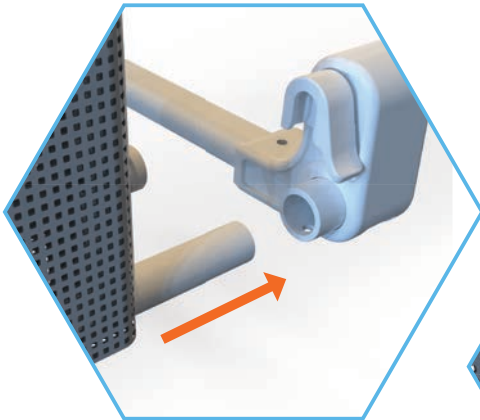


STEP 2: MESH INSTALLATION

1. To install the Mesh on the Bed Rail, slide the Mesh over the Frame until it reaches the other end and zip it shut to complete the installation.

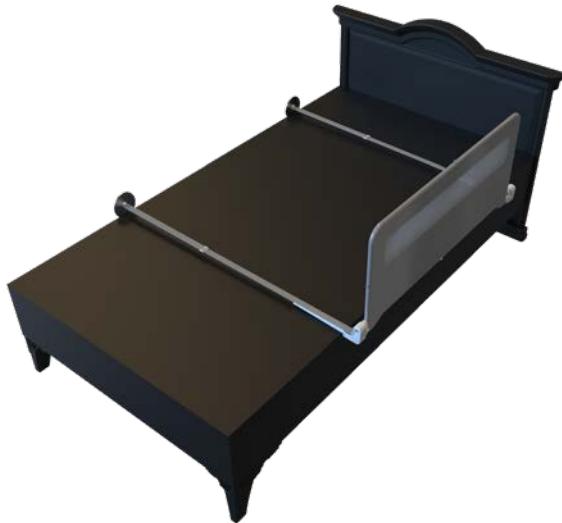


2. Insert the plastic hinge into the assembled panel and press in the metal spring button to fully insert the tube into the hole in the plastic hinge. The spring button should line up with the access hole in the plastic sleeve on the hinge. The spring button will rebound and lock the tube in place.

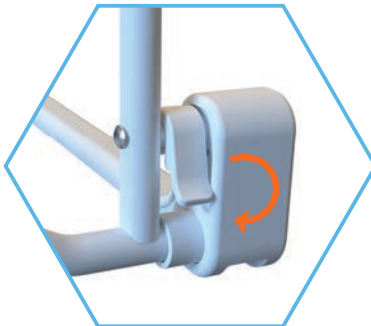


STEP 3: POSITIONING THE BED RAIL

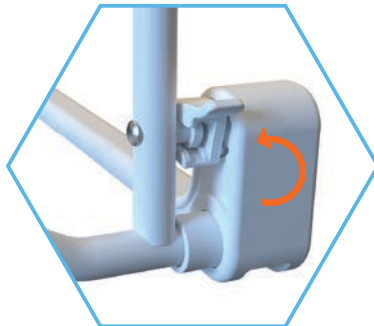
1. Set up the Bed Rail in locked position. Place the Bed Rail on the side of the bed that you would like to have protected, place the fixed plate with strap on the opposite side of the Bed Rail and mount to the outer edge of the box spring. Make sure to adjust the slider to ensure a snug fit against the base of bed. Always readjust the slider whenever there is a change of Bed Rail position.



LOCKED



UNLOCKED

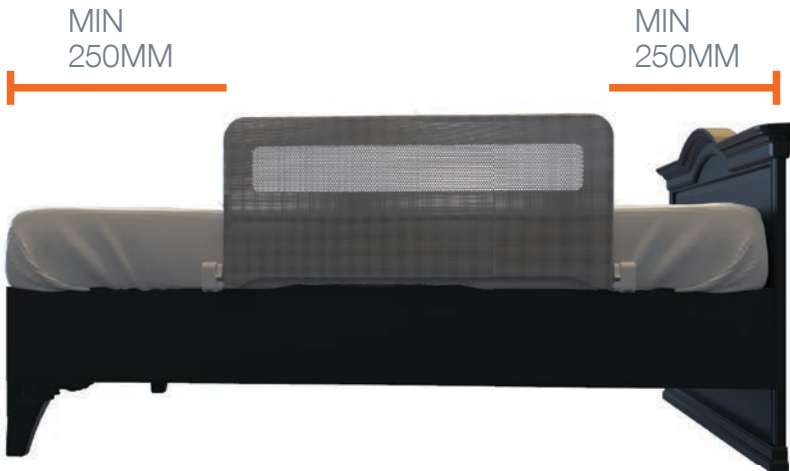


2. Check to make sure the left and right under bar assemblies are parallel to one another, then place the mattress on the top of the assembly.



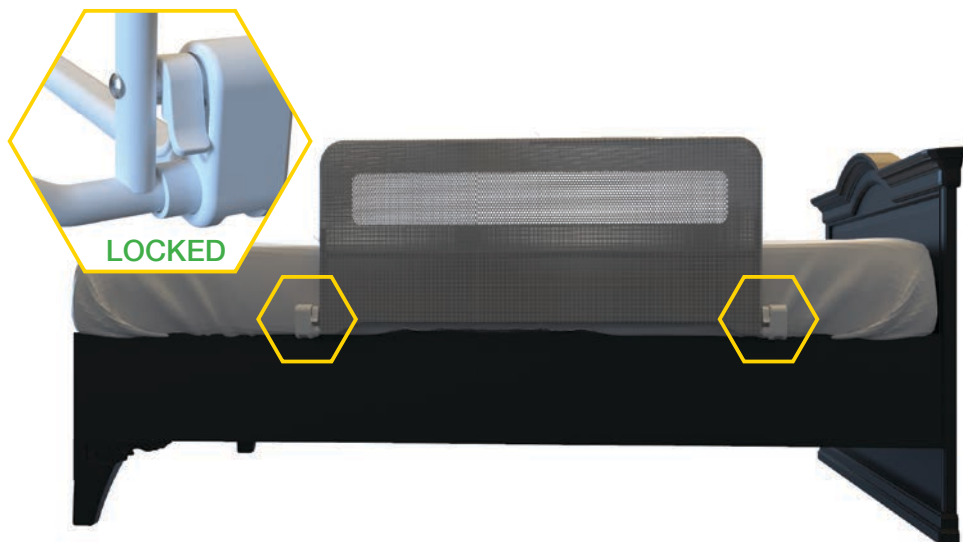
MINIMUM DISTANCE WARNING

To prevent the risk of strangulation, it is essential to ensure that when the Bed Rail is fitted into position, there is a gap of at least 250mm (10”) between each end of the bed and the corresponding end of the Bed Rail.

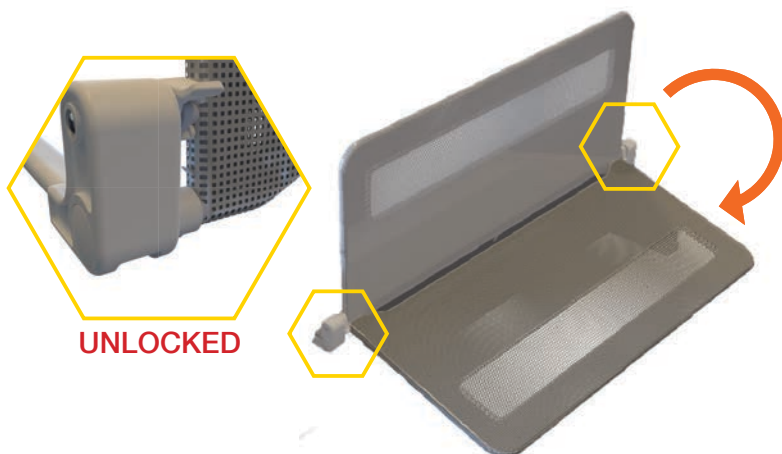


USING THE BED RAIL

1. Step up Bed Rail: Swing up the panel. Turn the locking tabs and hold them at unlocked position. Continue to swing until the panel touches the side of the mattress. Release the locking tabs and the Bed Rail is locked into use position.



Fold down bed rail: With the locking tabs turned to the unlocked position, hold the upper part of the Bed Rail firmly and swing it down. The Bed Rail now should be in the down position.



CLEANING INSTRUCTIONS

Simply use a soft damp cloth to wipe Bed Rail, dry after cleaning. Do not use chemical or abrasive cleaners.



WARRANTY CERTIFICATE

Congratulations! You have made an excellent choice of this quality product. Our commitment to quality also includes our service. Should you, contrary to expectations, experience defects due to manufacturing faults, we will provide you with a warranty against defects as follows:

Warranty

The product is guaranteed to be free from defects in workmanship and parts for a period of 12 months from the date of purchase. Defects that occur within this warranty period, under normal use and care, will be repaired, replaced or refunded at our discretion. The benefits conferred by this warranty are in addition to all rights and remedies in respect of the product that the consumer has under the Competition and Consumer Act 2010 and similar state and territory laws.

Our goods come with guarantees that cannot be excluded under the Australian Consumer Law. You are entitled to a replacement or refund for a major failure and for compensation for any other reasonably foreseeable loss or damage. You are also entitled to have the goods repaired or replaced if the goods fail to be of acceptable quality and the failure does not amount to a major failure.

Proof of Purchase

This warranty is valid for the original purchase and is not transferable. Please keep your purchase docket, tax invoice or receipt as the best proof of purchase, and as proof of date on which the purchase was made.

Extent of Warranty

This warranty is limited to defects in workmanship or parts. All defective products or parts will be repaired or replaced. This warranty does not cover consumable items.

Normal Wear and Tear

This warranty does not cover normal wear and tear to the products or parts.

Exclusions

This warranty does not cover:

- Any defects caused by an accident, misuse, abuse, improper installation or operation, lack of reasonable care, unauthorised modification, loss of parts, tampering or attempted repair by a person not authorised by the distributor.
- Any product that has not been installed, operated or maintained in accordance with the manufacturer's operating instructions provided with the product.
- Any product that has been used for purposes other than domestic use.

To Make a Claim

If a defect in the goods appears within 12 months, you are entitled to claim a warranty. Please contact after sales support via the link below:

www.permachildsafety.com/contact-us

Please ensure that you have a copy of proof of purchase so that we are able to respond as quickly and efficiently as possible.

WARRANTY CARD

Details:

Product Name: Baby Bed Rail

Product Number: Grey 2774

Your Name:

Address:

Phone:

Email:

Date of Purchase:

Location of Purchase:

We recommend that you keep a copy of your receipt, showing the date of purchase, with this warranty certificate and keep for your reference. In the event of a product fault, please contact after sales support. Ensure that you include the product details (as shown on this card) so that we are able to respond as quickly and efficiently as possible.

AFTER SALES SUPPORT

Product Code: Grey 2774



For questions, concerns and to view our latest products visit:
www.permachildsafety.com/contact-us



©2020 Permastik Pty Ltd.
All Rights Reserved.
Distributed by Perma Products®
35 Paringa Road, Murarrie, QLD Australia
www.permaproducts.com
Made in China to Perma quality standards

Perma™ 
Child Safety
next generation safety



CARDBOARD BOX
PLEASE RECYCLE