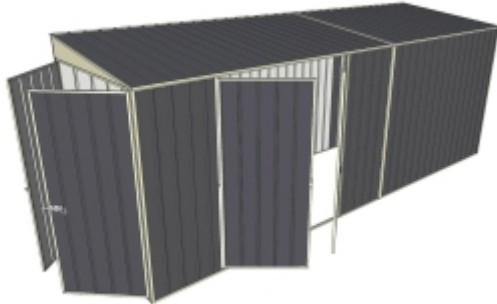


## Buildashed Specifications

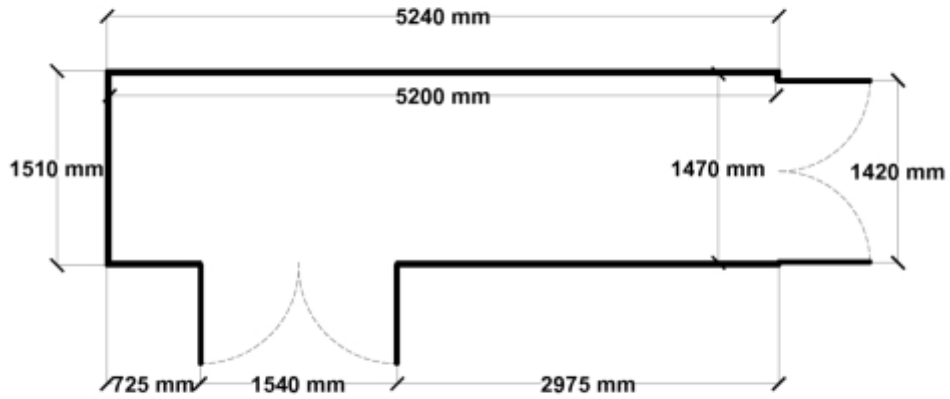


Color	Colorbond Equivalent*	Bunnings I/N
Grey	Monument	0378377
Green	Pale Eucalypt	3317683
Cream	Paperbark	3317684
Zinc	Galvanized Steel	3317685

*Equivalent color names listed are Trademarks of Bluescope Steel Limited and are only used for comparison. The use of color names indicates no more than color equivalency.*

Model	S15H252H22
Roof type	Skillion
Exterior dimension	1510mm x 5240mm
Interior dimension	1470mm x 5200mm
Height @ wall	1900mm
Height @ ridge	2100mm
Primary door type	Double Hinged
Primary door height	1845mm
Primary door opening	1430mm
Secondary door type	Double Hinged
Secondary door height	1845mm
Secondary door opening	1540mm
Area	7.91sq mt
Slab size	1635mm x 5365mm x 100mm

## Floor Plan



### Features

- 1.9m wall height for more head room
- All holes pre-drilled for easy assembly
- Mid-wall frame for extra strength
- Your shed will arrive in 9 boxes, with no box greater than 25kg
- Easy to follow video enhanced instructions.

Anchor brackets and masonry bolts are supplied with this shed.

Heavy duty door channel protector ramps are supplied with this shed.

*All measurements listed have a tolerance of +/- 10mm*

