

Buildashed Specifications

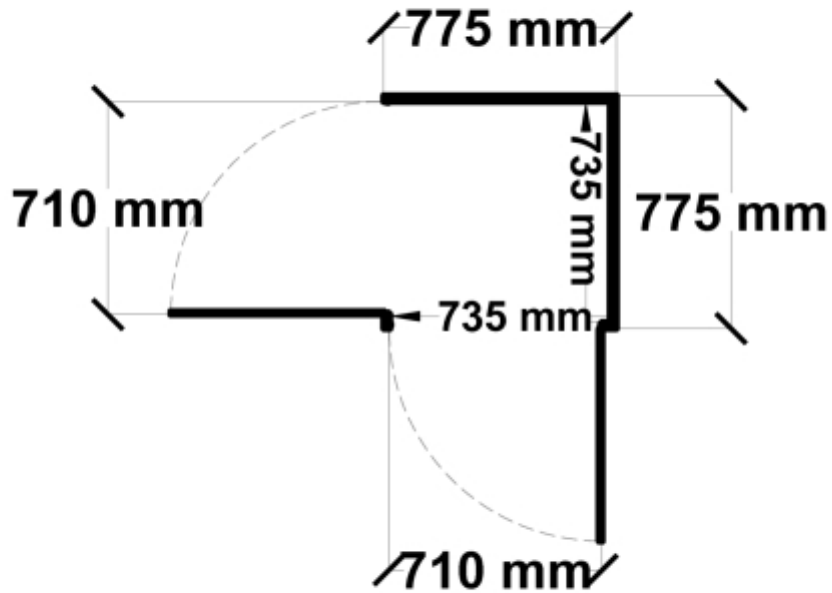


| Color | Colorbond Equivalent* | Bunnings I/N |
|-------|-----------------------|--------------|
| Grey | Monument | 0378489 |
| Green | Pale Eucalypt | 3316178 |
| Cream | Paperbark | 3316180 |
| Zinc | Galvanized Steel | 3316183 |

Equivalent color names listed are Trademarks of Bluescope Steel Limited and are only used for comparison. The use of color names indicates no more than color equivalency.

| Model | S08H108H1 |
|------------------------|-----------------------|
| Roof type | Skillion |
| Exterior dimension | 775mm x 775mm |
| Interior dimension | 735mm x 735mm |
| Height @ wall | 1900mm |
| Height @ ridge | 2040mm |
| Primary door type | Single Hinged |
| Primary door height | 1845mm |
| Primary door opening | 720mm |
| Secondary door type | Single Hinged |
| Secondary door height | 1845mm |
| Secondary door opening | 720mm |
| Area | 0.60sq mt |
| Slab size | 900mm x 900mm x 100mm |

Floor Plan



Features

- 1.9m wall height for more head room
- All holes pre-drilled for easy assembly
- Mid-wall frame for extra strength
- Your shed will arrive in 5 boxes, with no box greater than 25kg
- Easy to follow video enhanced instructions.

Anchor brackets and masonry bolts are supplied with this shed.

Heavy duty door channel protector ramps are supplied with this shed.

All measurements listed have a tolerance of +/- 10mm

